

# Sailing catamaran Saona 47 Grand Large

BASIC INFORMATION	LAYOUT
<ul style="list-style-type: none"> <li>▪ Year: 2019</li> <li>▪ Builder: Fountaine Pajot</li> <li>▪ Length: 13.94 m</li> <li>▪ Beam: 7.7 m</li> <li>▪ Draft: 1.3 m</li> <li>▪ Displacement: 13,800 kg</li> <li>▪ Engines: 2 x 60 HP</li> <li>▪ Fuel tank: 2 x 470 L (total 940 L)</li> <li>▪ Water tank: 700 L</li> <li>▪ Double cabins: 5</li> <li>▪ Single cabins: 1</li> <li>▪ Bed in saloon: no</li> <li>▪ Persons [recomm./licensed]: 10 / 11</li> <li>▪ Showers [cabins + deck]: 5+1</li> <li>▪ Heads [cabins]: 5</li> </ul>	
HIGHLIGHTS	HIGHLIGHTS – continued
<ul style="list-style-type: none"> <li>▪ <b>Air conditioning 220V 50HZ main syst. 68K BTU Quintet</b></li> <li>▪ <b>Watermaker EcoTec 110L/h 50HZ</b></li> <li>▪ <b>12KW 220V/50HZ genset</b></li> <li>▪ <b>2000W Inverter/charger</b></li> <li>▪ <b>220V main grid 50hz</b></li> <li>▪ <b>Large electric marine toilet (total 5)</b></li> <li>▪ <b>12V fan (total 6)</b></li> <li>▪ <b>Hydraulic platform (maximum load 200kg)</b></li> <li>▪ <b>Solar panels 4x90/100 W</b></li> <li>▪ <b>Electric winches for mainsail and genoa sheets</b></li> <li>▪ <b>2 size 60 self tailing electric winches for mainsail and genoa sheets</b></li> <li>▪ <b>1500W electric windlass with circuit breaker protection</b></li> </ul>	<ul style="list-style-type: none"> <li>▪ <b>Zar-Mini 20 HDL Dinghy from Hypalon, 3.8m with console &amp; 20HP Mercure engine</b></li> <li>▪ <b>Gas barbecue</b></li> <li>▪ <b>12V 90L Freezer</b></li> <li>▪ <b>220V Microwave oven</b></li> <li>▪ <b>Dishwasher 6 pers.</b></li> <li>▪ <b>Galley fully equipped</b></li> <li>▪ <b>Fitting out stb forepeak</b></li> <li>▪ <b>Enclosure for bimini helm station</b></li> <li>▪ <b>Outdoor cushions (cockpit + lounge deck)</b></li> <li>▪ <b>Cockpit fridge</b></li> <li>▪ <b>Synthetic teak floor transoms and cockpit</b></li> </ul>
SALOON	CHART TABLE
<ul style="list-style-type: none"> <li>▪ <b>12V fan (total 6)</b></li> <li>▪ <b>Air conditioning 220V 50HZ main syst. 68K BTU Quintet</b></li> <li>▪ Accessible via a single-leaf sliding door with carpeted entrance</li> <li>▪ Panoramic view through picture windows</li> <li>▪ Natural lighting via 2 glass panels</li> <li>▪ 1 veneered table</li> <li>▪ 6 places bench seat</li> <li>▪ Large storage boxes under the bench</li> <li>▪ Ventilation via to 2 large front opening hatches</li> <li>▪ Main lighting system by 5 spotlights</li> </ul>	<ul style="list-style-type: none"> <li>▪ Wooden chart table and storage with flap cover</li> <li>▪ High navigation instrument console</li> <li>▪ 12V Electric panel</li> <li>▪ One 12V electric outlet</li> <li>▪ Lighting via 1 spotlight &amp; 1 reading lamp for the chart table</li> </ul>
GALLEY	FOREPEAK
<ul style="list-style-type: none"> <li>▪ <b>12V 90L Freezer</b></li> <li>▪ <b>220V Microwave oven</b></li> <li>▪ <b>Dishwasher 6 pers.</b></li> <li>▪ <b>Galley fully equipped</b></li> <li>▪ Galley opened to the outside thanks to a sliding bay</li> <li>▪ Ventilation via 1 opening hatch above stove top</li> <li>▪ Worktop</li> <li>▪ Twin stainless-steel sinks</li> <li>▪ Pressurized hot and cold freshwater system from mixer faucet</li> <li>▪ 1 x 4 burner stove with pan holder</li> <li>▪ 1 stainless gas oven</li> <li>▪ <b>190L cold storage volume (12V)</b></li> <li>▪ <b>2 large cupboards under the sinks accommodating a dishwasher</b></li> </ul>	<ul style="list-style-type: none"> <li>▪ Fore peak (starboard hull): <ul style="list-style-type: none"> <li>- <b>Fitting out stb forepeak</b></li> <li>- Access from the forward cabin or the deck hatch</li> <li>- Fully-painted, gel-coat finish</li> <li>- Buoyancy reserve under half-height shelf</li> </ul> </li> <li>▪ Forepeak (port hull): <ul style="list-style-type: none"> <li>- Access from the forward cabin</li> <li>- Fully-painted, gel-coat finish</li> <li>- Buoyancy reserve under half-height shelf</li> </ul> </li> </ul>

# Sailing catamaran

## Saona 47 Grand Large

<ul style="list-style-type: none"> <li>▪ 1 storage behind the burner stove</li> <li>▪ 1 cupboard under the burner stove</li> <li>▪ 1 cutlery drawer, 2 drawers for pots &amp; pans</li> <li>▪ 1 central "island" with cupboard and a top accessed trash can, bags removed through separate door</li> <li>▪ 1 large storage cupboard on the starboard side of the entrance that can accommodate a maximum volume of 130L/34gals in refrigeration mode or 90L/24gals in conservation mode</li> <li>▪ Storage spaces underneath the floor</li> <li>▪ 4 spotlights</li> </ul>	
<b>CABINS x 5 (QUINTET VERSION)</b>	<b>CABINS x 5 (QUINTET VERSION) - continued</b>
<ul style="list-style-type: none"> <li>▪ <b>Beds with slatted bases for 5 cabins</b></li> <li>▪ <b>12V fan (total 6)</b></li> <li>▪ <b>Air conditioning 220V 50HZ main syst. 68K BTU Quintet</b></li> <li>▪ Cabins flooring: Timber-laid floor</li> <li>▪ Starboard hull: 2 double cabins + 2 bathrooms. A companionway behind the saloon gives access to the starboard hull (wooden staircase, lighting via 2 spotlights)</li> <li>▪ Aft cabin (starboard hull):               <ul style="list-style-type: none"> <li>- Access from the companionway via a wooden door</li> <li>- <b>Queen-size Island Bed (1,6x2 m)</b></li> <li>- Drawer below the bed with frontal access</li> <li>- Bedside shelves</li> <li>- Wardrobe</li> <li>- Cupboard with shelves in it</li> <li>- Ventilation via a deck hatch + and 1 hull porthole</li> <li>- Rear panoramic window</li> <li>- Large picture-window on hull side</li> <li>- Curtains to all windows</li> <li>- Main lighting via 2 spotlights &amp; 2 berth lights</li> <li>- 1 Bedside two-way switch</li> <li>- Clothes hooks</li> <li>- Lining covered ceilings</li> </ul> </li> <li>▪ Fore cabin (starboard hull):               <ul style="list-style-type: none"> <li>- Access from the companionway via a wooden door</li> <li>- <b>Queen-size Island Bed/ Double bed (1,6x2 m)</b></li> <li>- Drawer below the bed with frontal access</li> <li>- Wardrobe</li> <li>- Cupboard with shelves in it (starboard)</li> <li>- Ventilation thanks to a deck hatch + 1 hull porthole</li> <li>- Large picture-window on hull side</li> <li>- Curtains to all windows and doors</li> <li>- Main lighting via 2 spotlights &amp; 2 berth lights</li> <li>- 1 Bedside two-way switch</li> <li>- Clothes hooks</li> <li>- Lining covered ceilings</li> </ul> </li> </ul>	<ul style="list-style-type: none"> <li>▪ Port hull: 3 double cabins + 3 bathrooms. A Companionway behind the saloon gives access to the starboard hull. The central &amp; fore cabins though a companionway ahead of the saloon (wooden staircase, 1 spotlight)</li> <li>▪ Aft cabin (port hull):               <ul style="list-style-type: none"> <li>- Access from the cockpit though Plexiglas door including keylock</li> <li>- <b>Queen-size bed (1,6x2 m)</b></li> <li>- Drawer below the bed with frontal access</li> <li>- Wardrobe</li> <li>- Cupboard with shelves in it</li> <li>- Ventilation thanks 1 hull porthole</li> <li>- Picture-window on hull side</li> <li>- Curtains to all windows and doors</li> <li>- Lining covered ceilings</li> <li>- Main lighting via 2 spotlights &amp; 2 berth lights</li> <li>- 1 Bedside two-way switch</li> <li>- Clothes hook</li> </ul> </li> <li>▪ Central cabin (port hull):               <ul style="list-style-type: none"> <li>- Access from the companionway via a wooden door</li> <li>- <b>2 single bunk beds (0,9 x2 m)</b></li> <li>- Drawer below the bed with frontal access</li> <li>- Wardrobe</li> <li>- Ventilation thanks to a deck hatch + 1 hull porthole</li> <li>- Large picture-window on hull side</li> <li>- Curtains to all windows and doors</li> <li>- Main lighting via 2 spotlights &amp; 2 berth lights</li> <li>- 1 Bedside two-way switch</li> <li>- Clothes hook</li> <li>- Lining covered ceilings</li> </ul> </li> <li>▪ Fore cabin (port hull):               <ul style="list-style-type: none"> <li>- Access from the companionway via a wooden door</li> <li>- <b>Queen-size Island Bed (1,6x2 m)</b></li> <li>- Drawer below the bed with frontal access</li> <li>- Wardrobe</li> <li>- Ventilation thanks to a deck hatch and 1 hull porthole</li> <li>- Large picture-window on hull side</li> <li>- Curtains to all windows and doors</li> <li>- Main lighting via 2 spotlights &amp; 2 berth lights</li> <li>- 1 Bedside two-way switch</li> <li>- Clothes hook</li> <li>- Lining covered ceilings</li> </ul> </li> </ul>
<b>DECK LAYOUT</b>	<b>DECK LAYOUT - continued</b>
<ul style="list-style-type: none"> <li>▪ Helm station:               <ul style="list-style-type: none"> <li>- <b>Enclosure for bimini helm station</b></li> </ul> </li> </ul>	<ul style="list-style-type: none"> <li>▪ Lounge deck:               <ul style="list-style-type: none"> <li>- <b>Outdoor cushions (cockpit + lounge deck)</b></li> </ul> </li> </ul>

# Sailing catamaran Saona 47 Grand Large

<ul style="list-style-type: none"> <li>- Access through staircase from the cockpit</li> <li>- Triple helmsman seat</li> <li>- Instrument console</li> <li>- 360° view / All-round visibility</li> <li>- Access to the Lounge deck through staircase</li> <li>▪ Cockpit:           <ul style="list-style-type: none"> <li>- <b>1 cold shower in the port platform</b></li> <li>- <b>Cockpit tent</b></li> <li>- <b>Cockpit courtesy lighting</b></li> <li>- <b>Outdoor cushions (cockpit + lounge deck)</b></li> <li>- <b>1 Teck cockpit table with a capacity of 10 places</b></li> <li>- <b>Cockpit fridge</b></li> <li>- <b>Gas barbecue</b></li> <li>- Large cockpit: Circulation without threshold towards the saloon.</li> <li>- Access via the transom platforms</li> <li>- Transom platform with swimming ladder (at port) &amp; handrail</li> <li>- GRP Bimini protecting all the cockpit</li> <li>- 8 seats sofa around the table</li> <li>- Serving hatch to the galley via sliding bay</li> <li>- 1 Large storage area under the sofa</li> <li>- 1 Fainting sofa with large storage locker</li> <li>- 1 Transom sofa with large storage locker</li> <li>- 1 Gas chest for 2 bottles</li> <li>- Additional ventilation and lighting via 1 deck hatch</li> <li>- Lighting via 2 waterproof spotlights</li> </ul> </li> </ul>	<ul style="list-style-type: none"> <li>- Access via staircase from wheelhouse</li> <li>- Available area for solarium and mattresses</li> <li>- Visibility 360°</li> <li>- Lounge with large sofa</li> <li>▪ Fore-deck saloon:           <ul style="list-style-type: none"> <li>- 1 Large chest giving access to windlass and anchor as well as water tanks</li> <li>- Relaxation area with U-shaped sunbed</li> </ul> </li> <li>▪ Engine holds:           <ul style="list-style-type: none"> <li>- Access via polyester deck hatch installed on stainless steel gas cylinders</li> <li>- Sound proofing</li> <li>- Neon lighting</li> </ul> </li> <li>▪ Other:           <ul style="list-style-type: none"> <li>- <b>Hydraulic platform (maximum load 200kg)</b></li> <li>- <b>Zar-Mini 20 HDL Dinghy from Hypalon, 3.8m with console &amp; 20HP Mercure engine</b></li> <li>- <b>Bimini for helm station</b></li> <li>- <b>Hard top for helm station</b></li> <li>- <b>Outdoor foredeck cushions</b></li> <li>- <b>Protective strip on both transoms</b></li> <li>- <b>2nd swim ladder</b></li> <li>- <b>Synthetic teak floor transoms and cockpit</b></li> <li>- <b>Additional mooring cleats</b></li> <li>- <b>Integrated gas plancha</b></li> </ul> </li> </ul>
<p><b>MOTORIZATION</b></p>	<p><b>PLUMBING</b></p>
<ul style="list-style-type: none"> <li>▪ Engines &amp; Equipments:           <ul style="list-style-type: none"> <li>- <b>2 Saildrive Volvo engine D2 60 HP</b></li> <li>- 2x3 Blades fixed propeller</li> <li>- Salt water filters</li> <li>- Engine cooled via heat exchanger</li> <li>- Complete engine panel and dual controls at helm station</li> <li>- Hour meter</li> </ul> </li> <li>▪ Fuell system:           <ul style="list-style-type: none"> <li>- 1 Fuel tank 470L in each hull - fuel filling on both side decks including backflow protection device</li> <li>- 2 Electric fuel gauge (indicator at chart table)</li> <li>- 1 Fuel pre-filter / water separator + 1 engine fuel filter / engine</li> <li>- Fuel shut-off valves</li> </ul> </li> </ul>	<ul style="list-style-type: none"> <li>▪ <b>Watermaker EcoTec 110L/h 50HZ</b></li> <li>▪ Freshwater:           <ul style="list-style-type: none"> <li>- <b>Pressurized seawater system</b></li> <li>- 2 Freshwater tanks in the technical compartment at bow (700L total capacity)</li> <li>- 1 Electric gauge at chart table</li> <li>- 1 Electric pump and pressure accumulator</li> <li>- 1 Mixed water heater 40l in port hull</li> </ul> </li> <li>▪ Grey water and black water:           <ul style="list-style-type: none"> <li>- Shower drainage via individual shower pump (automatic pump-out)</li> <li>- 1 holding tank</li> </ul> </li> <li>▪ Bilgiing system:           <ul style="list-style-type: none"> <li>- <b>Auto. switch for bilge pumps</b></li> <li>- 1 electric bilge pump (2m³/h) in each engine room</li> <li>- 1 electric bilge pump (2m³/h) in each hull</li> <li>- 1 manual exterior bilge pump</li> </ul> </li> </ul>
<p><b>HEADS COMPARTMENTS x 5 (QUINTET VERSION)</b></p>	<p><b>HEADS COMPARTMENTS x 5 (QUINTET VERSION)- continued</b></p>
<ul style="list-style-type: none"> <li>▪ Fore bathrooms (starboard hull):           <ul style="list-style-type: none"> <li>- <b>Large electric marine toilet (total 5)</b></li> <li>- Access via wooden door</li> <li>- Washbasin with worktop</li> <li>- Mirror with shelf</li> <li>- Hot and cold freshwater system from mixer faucet</li> <li>- <b>Shower separated via a Plexiglas panel</b></li> <li>- Electric drainage pump</li> <li>- Mixing valve tap for shower</li> <li>- Storage closet with shelves under the worktop</li> </ul> </li> </ul>	<ul style="list-style-type: none"> <li>▪ Forward bathroom (port hull):           <ul style="list-style-type: none"> <li>- <b>Large electric marine toilet (total 5)</b></li> <li>- Access via wooden door</li> <li>- Washbasin with worktop</li> <li>- Mirror with shelf</li> <li>- Hot and cold freshwater system from mixer faucet</li> <li>- Shower separated via a Plexiglas panel</li> <li>- Electric drainage pump for greywater</li> <li>- Mixing valve tap for shower</li> <li>- Storage closet with shelves under the worktop</li> </ul> </li> </ul>

# Sailing catamaran Saona 47 Grand Large

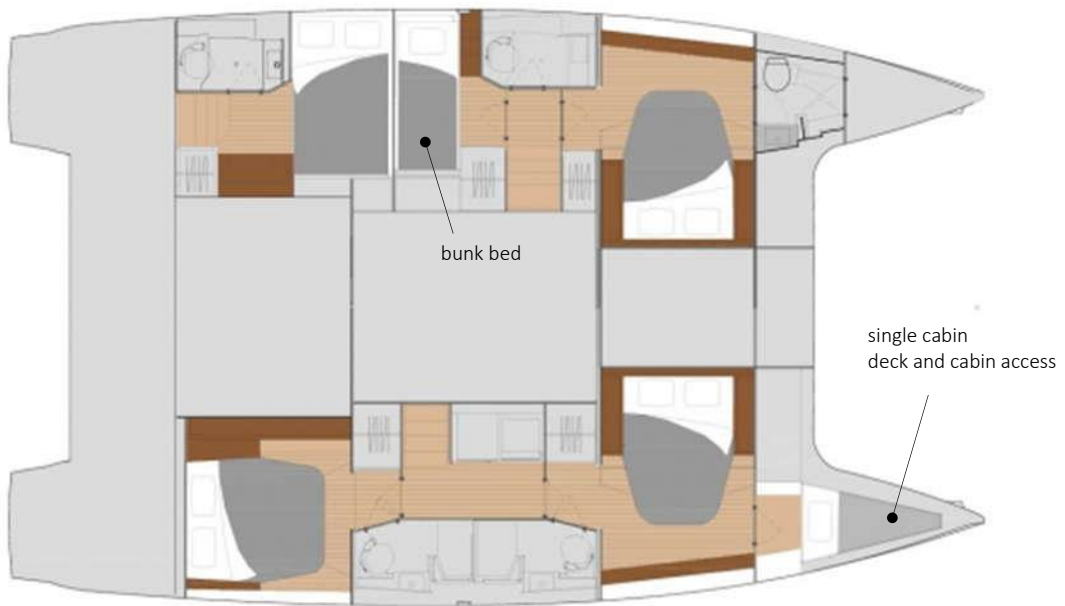
<ul style="list-style-type: none"> <li>- Clothes hooks</li> <li>- Ventilation via 1 deck hatch</li> <li>- Lighting via 2 spotlights</li> <li>▪ Aft bathroom (starboard hull):           <ul style="list-style-type: none"> <li>- <b>Large electric marine toilet (total 5)</b></li> <li>- Access via wooden door</li> <li>- Washbasin with worktop</li> <li>- Mirror with shelf</li> <li>- Hot and cold freshwater system from mixer faucet</li> <li>- Electric drainage pump for greywater</li> <li>- Mixing valve tap for shower</li> <li>- Storage closet with shelves under the worktop</li> <li>- Clothes hooks</li> <li>- Ventilation thanks to 1 deck hatch</li> <li>- Lighting via 2 spotlights</li> </ul> </li> </ul>	<ul style="list-style-type: none"> <li>- Clothes hooks</li> <li>- Ventilation thanks to 1 deck hatch</li> <li>- Lighting via 2 spotlights</li> <li>▪ Aft bathroom (port hull):           <ul style="list-style-type: none"> <li>- <b>Large electric marine toilet (total 5)</b></li> <li>- Access via wooden door</li> <li>- Washbasin with worktop</li> <li>- Mirror with shelf</li> <li>- Hot and cold freshwater system from mixer faucet</li> <li>- Electric drainage pump for greywater</li> <li>- Mixing valve tap for shower</li> <li>- Storage closet with shelves under the worktop</li> <li>- Clothes hooks</li> <li>- Ventilation thanks to 1 deck hatch</li> <li>- Lighting via 2 spotlights</li> </ul> </li> <li>▪ Central bathroom (port hull):           <ul style="list-style-type: none"> <li>- <b>Large electric marine toilet (total 5)</b></li> <li>- Access via wooden door from the companionway</li> <li>- Washbasin with worktop</li> <li>- Mirror with shelf</li> <li>- Hot and cold freshwater system from mixer faucet</li> <li>- Electric drainage pump for greywater</li> <li>- Mixing valve tap for shower</li> <li>- Ventilation</li> </ul> </li> </ul>
<b>ELECTRICITY / ELECTRONIC</b>	<b>ELECTRICITY / ELECTRONIC - continued</b>
<ul style="list-style-type: none"> <li>▪ Power circuit:           <ul style="list-style-type: none"> <li>- <b>220V main grid 50hz</b></li> <li>- <b>2000W Inverter/charger</b></li> <li>- <b>1 set starboard onboard/engine batteries of 600A/h (4 x 150 Ah)</b></li> <li>- <b>Additional AGM battery 150A</b></li> <li>- 2 x 115A/12V engine alternators</li> <li>- 1 port engine battery of 50A/h/ 800CCA</li> <li>- 1 automatic back-up link and 1 Manual back-up link</li> </ul> </li> <li>▪ 12V Electrical Distribution Panel:           <ul style="list-style-type: none"> <li>- <b>Interior 12V outlet and waterproof exterior 12V outlet</b></li> <li>- <b>Additional Interior 12V outlet</b></li> <li>- General 12V distribution panel at chart table protected via circuit breakers</li> <li>- Voltmeter for onboard batteries</li> <li>- Spare sockets for extra equipment</li> <li>- All accommodation lightings LED</li> </ul> </li> <li>▪ Navigation:           <ul style="list-style-type: none"> <li>- <b>Second VHF AIS helmstation</b></li> <li>- <b>GARMIN 2 Smart Cruising : Autopilot, VHF, AIS, 2*GPS 7410, 2*multi GMI20</b></li> <li>- <b>Radar + support + wiring</b></li> <li>- <b>GARMIN autopilot remote</b></li> <li>- <b>Add. windlass control chain counter</b></li> </ul> </li> </ul>	<ul style="list-style-type: none"> <li>▪ Other:           <ul style="list-style-type: none"> <li>- <b>Air conditioning 220V 50HZ main syst. 68K BTU Quintet</b></li> <li>- <b>Solar panels 4x90/100 W</b></li> <li>- <b>12KW 220V/50HZ genset</b></li> <li>- <b>Watermaker EcoTec 110L/h 50HZ</b></li> <li>- <b>Interior courtesy LED lighting</b></li> <li>- <b>Fusion audio pack Bluetooth 4 Sp</b></li> <li>- <b>Electric winches for mainsail and genoa sheets</b></li> <li>- <b>Cockpit courtesy lighting</b></li> <li>- <b>Video TV/HIFI pack</b></li> <li>- <b>TV/radio antenna</b></li> <li>- <b>Additional electric freshwater pump</b></li> <li>- <b>5x Electric head large bowl</b></li> <li>- <b>6x 12V fan</b></li> <li>- 1 VHF mast head antenna</li> </ul> </li> </ul>
<b>DECK FITTINGS</b>	<b>DECK FITTINGS - continued</b>
<ul style="list-style-type: none"> <li>▪ Helm station:           <ul style="list-style-type: none"> <li>- <b>Double clutche for reefs 2 and 3</b></li> <li>- <b>2 size 60 self tailing electric winches for mainsail and genoa sheets</b></li> <li>- 1 mainsheet tackle led aft to coach roof</li> </ul> </li> </ul>	<ul style="list-style-type: none"> <li>▪ Other Equipments:           <ul style="list-style-type: none"> <li>- <b>1 x 1500W electric windlass with circuit breaker protection</b></li> <li>- <b>Manual gangway</b></li> <li>- <b>Exterior window blinds for saloon</b></li> </ul> </li> </ul>

# Sailing catamaran Saona 47 Grand Large

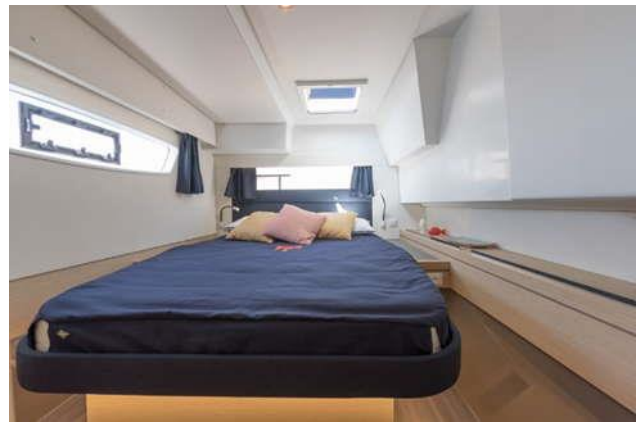
<ul style="list-style-type: none"> <li>- 1 clutch for mainsail sheet</li> <li>- 1 clutch for the mainsail halyard</li> <li>- 3 clutch for the reef lines</li> <li>- 1 Ball bearing mainsheet traveler</li> <li>- 2 x tackle on mainsheet traveler clutches with back on roof</li> <li>- 2 x genoa tracks with load block</li> <li>- 2 genoa sheets</li> <li>- 1 size 50 self-tailing winch for main halyard and reef lines</li> <li>- 1 halyard storage bag</li> <li>▪ Steering System:               <ul style="list-style-type: none"> <li>- <b>Dralon protective cover for wheel</b></li> <li>- 2 foam sandwich rudders on stainless steel rudder stock</li> <li>- Steering system by cable</li> <li>- Rudders linked mechanically by stock arm + transversal tube</li> <li>- Aluminum stern tubes</li> <li>- Self lining upper and lower rudderstock bearings</li> <li>- Emergency tiller</li> </ul> </li> </ul>	<ul style="list-style-type: none"> <li>- <b>Sun awning on the foredeck saloon</b></li> <li>- 1 steering compass</li> <li>- 3 winch handles with their 2 pockets</li> <li>- Pulpit and pushpit, stanchions with upper and lower guardrails</li> <li>- Pulpits with bow pulpit seats</li> <li>- Access to transom</li> <li>- <b>2 x tender davits with 1 x size 46 winch on port side</b></li> <li>- 7 mooring cleats (2 foredeck + 2 middle + 2 astern + 1 in anchor well)</li> <li>- 6 fenders</li> <li>- 2 x 50 ft long mooring lines</li> <li>- Anchor fairlead under bridge deck with built-in bridle</li> <li>- 1 roller on forward beam</li> <li>- Net on forward beam</li> <li>- 1 kit of spare parts</li> </ul>
<b>RIGGING &amp; SAILS</b>	<b>GENERAL EQUIPMENT / OTHER</b>
<ul style="list-style-type: none"> <li>▪ Mast &amp; Boom:               <ul style="list-style-type: none"> <li>- <b>Automatic mainsail Hook</b></li> <li>- <b>Lazy Jack and Lazy Bag</b></li> <li>- Mast and boom in anodized aluminum</li> <li>- Complete standing rigging</li> <li>- Ball bearing mainsail luff cars</li> <li>- 1 tackle on mainsail halyard</li> <li>- 1 topping lift</li> <li>- 3 reef pennants</li> <li>- 1 genoa halyard</li> <li>- 1 spinnaker halyard</li> <li>- Clutches on all halyards for genoa, spinnaker and topping lift</li> <li>- Clutches on reef pennants at boom exit</li> <li>- 2 flag halyards</li> <li>- Navigation, running and mooring lights</li> <li>- Deck lighting</li> </ul> </li> <li>▪ Sails:               <ul style="list-style-type: none"> <li>- Full batten CSR mainsail</li> <li>- Roller genoa fuller</li> <li>- Genoa with UV bands</li> </ul> </li> </ul>	<ul style="list-style-type: none"> <li>▪ <b>Zar-Mini 20 HDL Dinghy from Hypalon, 3.8m with console &amp; 20HP Mercure engine</b></li> <li>▪ <b>Grey fabric outdoor upholstery</b></li> <li>▪ <b>Taupe outdoor canvas</b></li> <li>▪ <b>Taupe PVC indoor upholstery</b></li> <li>▪ <b>Manual gangway</b></li> <li>▪ <b>Combination locking safe</b></li> <li>▪ <b>Upgrade Bose</b></li> <li>▪ <b>Chain + 25KG Anchor</b></li> <li>▪ <b>Navigational, safety and technical equipment with ocean life raft</b></li> <li>▪ <b>Hotel equipment standard LUX</b></li> <li>▪ Alpi woodworking</li> <li>▪ Salon flooring: Timber-laid floor</li> <li>▪ Lining on rotproof glass felt</li> <li>▪ Seat cushions</li> <li>▪ Polyether foam mattresses</li> </ul>



# Sailing catamaran Saona 47 Grand Large



## Sailing catamaran Saona 47 Grand Large



\* All pictures are for illustration only.